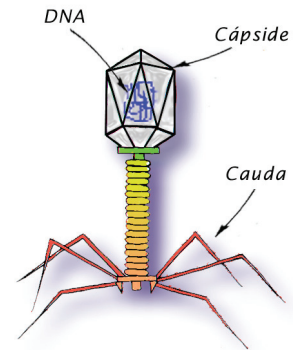


Comparações - Quadro 1

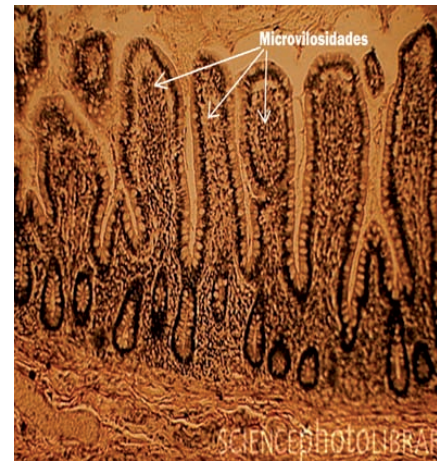


Bacteriófago infectando uma *E. Coli*.
Microscopia eletrônica de transmissão (TEM)
Aumento 65.000x
Biozentrum, Univ. of Basel.

Bacteriófago (T-4)

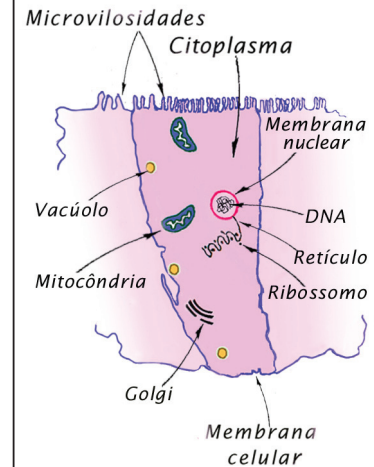


Vírus

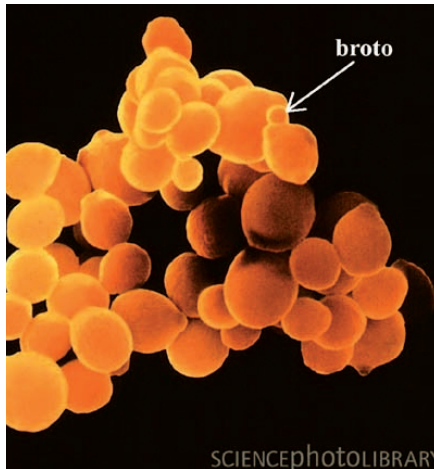


Enterócito - célula do epitélio intestinal
Microscopia óptica
Aumento de 35x
Eric Grave

Enterócito

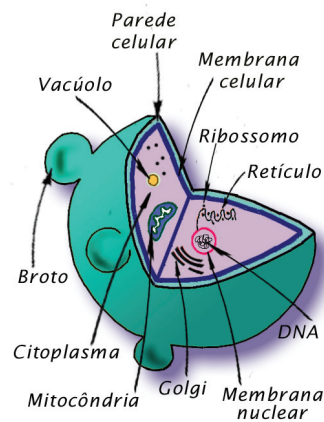


Animal



Candida albicans
Microscopia eletrônica de varredura (SEM)
Aumento de 7.250x.
Dr Kari Loumatmaa

Candida albicans

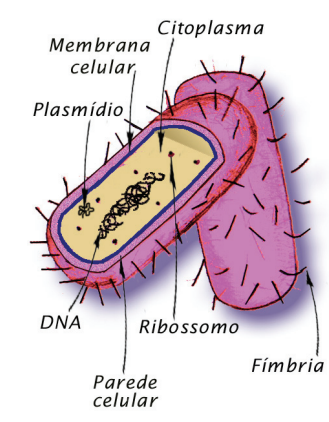


Fungo



Escherichia coli
Microscopia eletrônica de varredura (SEM)
aumento de 26.500x
Dr. Kari Loumatmaa

Escherichia coli



Bactéria

Quadro 2

Tamanho relativo dos objetos

